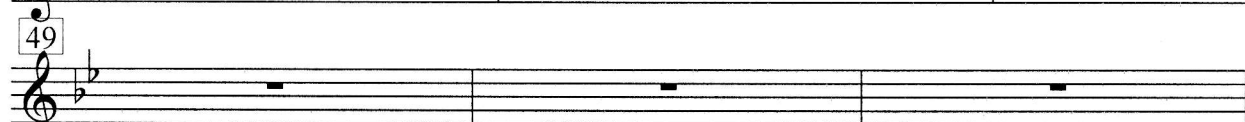
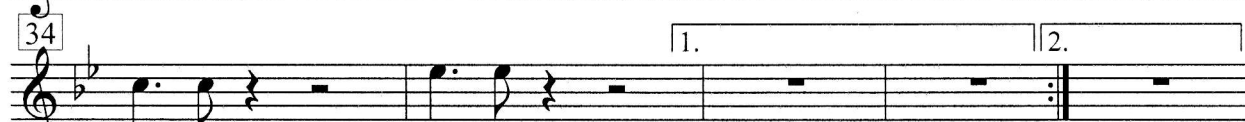
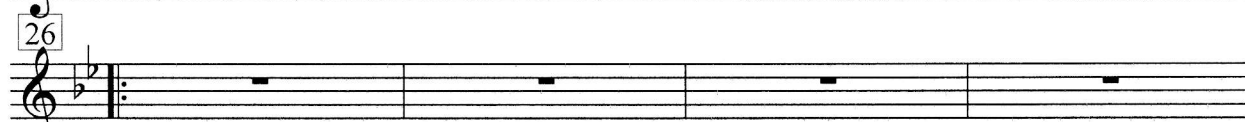
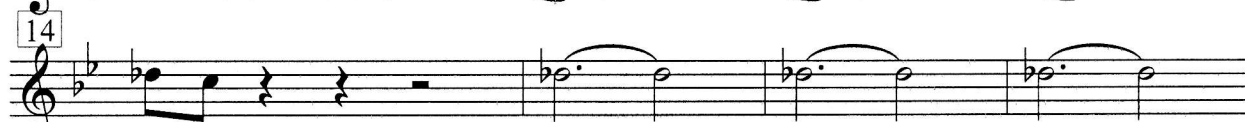
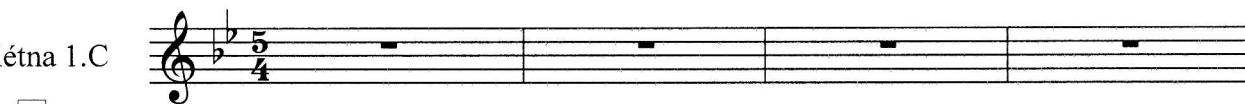


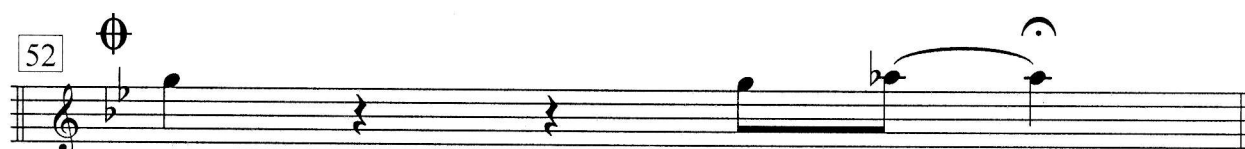
# Mission Impossible

téma

flétna 1.C



D.S.al Coda



# Mission Impossible

téma

flétna 2.C

Musical score for Flute 2.C, measures 1-49. The score is written in treble clef, key of B-flat major (two flats), and 5/4 time signature. It consists of 11 staves of music. Measure numbers 5, 9, 14, 18, 22, 26, 30, 34, 39, 42, 46, and 49 are indicated at the beginning of their respective staves. The music features various rhythmic patterns, including eighth and sixteenth notes, and rests. A double bar line with repeat dots is present at measure 26. A first ending bracket spans measures 34-38, and a second ending bracket spans measures 39-41. A fermata symbol is placed over measure 22.

D.S.al Coda

Musical score for Flute 2.C, measure 52. The measure begins with a fermata symbol. The notation shows a half note G4, followed by a quarter rest, a quarter note F4, a quarter note E4, and a half note D4.

# Mission Impossible

téma

horna 1.F

Musical score for Horn 1, F horn part of Mission Impossible theme. The score is written in 5/4 time and B-flat major. It consists of 11 staves of music. The first staff begins with a treble clef, a key signature of one flat, and a 5/4 time signature. The music features a mix of eighth and quarter notes, with some rests. Measure numbers 5, 9, 14, 18, 22, 26, 30, 34, 39, 42, 46, and 49 are indicated at the start of their respective staves. A first and second ending bracket is present between measures 34 and 39. The score concludes with the instruction "D.S.al Coda" at the end of the 11th staff.

D.S.al Coda

Coda section of the musical score, starting at measure 52. It features a treble clef, a key signature of one flat, and a 5/4 time signature. The music consists of a few notes, including a quarter note, a half note, and a quarter note, ending with a double bar line.

# Mission Impossible

téma

horna 2.F

Musical score for Horn 2, First Flute part of Mission Impossible theme. The score is written in 5/4 time and B-flat major. It consists of 14 staves of music. The first staff starts with a treble clef and a key signature of one flat. The music begins with a whole rest, followed by a series of eighth and quarter notes. The score includes various musical notations such as slurs, ties, and dynamic markings. The piece concludes with a double bar line and a repeat sign.

D.S.al Coda

Coda section of the musical score, starting at measure 52. It begins with a treble clef and a key signature of one flat. The music consists of a few notes, including a whole note and a half note, followed by a double bar line and a repeat sign.

# Mission Impossible

téma

klarinet 1.B

Musical score for Clarinet 1.B, measures 5-49. The score is written in treble clef with a key signature of one flat (B-flat) and a time signature of 5/4. The music features a variety of rhythmic patterns, including eighth and sixteenth notes, and rests. Measure 22 contains a double bar line with a circle containing a cross (⊕). Measure 34 includes first and second endings. Measure 49 ends with a double bar line.

D.S.al Coda

Musical score for Clarinet 1.B, measure 52. The measure begins with a double bar line and a circle containing a cross (⊕). The notation includes a quarter note, a quarter rest, a quarter note, a quarter rest, a quarter note, a quarter rest, and a half note with a fermata.

# Mission Impossible

téma

klarinet 2.B

Musical score for Clarinet 2.B, measures 5-49. The score is written in 5/4 time and B-flat major. It consists of 11 staves of music. Measure 5 is the start of the main theme. The melody is characterized by eighth and sixteenth notes, often beamed together. There are several rests throughout the piece. A first and second ending bracket is present between measures 34 and 39. The piece concludes at measure 49 with a double bar line.

D.S.al Coda

Coda musical notation, measure 52. The notation is in a single staff with a treble clef and a common time signature. It begins with a C-clef (soprano clef) on the first line, indicating a first ending. The measure contains a half note G4, followed by a quarter rest, a quarter note F#4, a quarter note E4, and a half note D4 with a fermata.



# Mission Impossible

téma

klarinet 3.B

Musical score for Clarinet 3.B, measures 5 to 49. The score is written in 5/4 time and features a melodic line with various rhythmic patterns, including eighth and sixteenth notes, and rests. The key signature has one flat (B-flat). The score includes a repeat sign at measure 30 and first/second endings at measures 34-39. Measure numbers 5, 9, 14, 18, 22, 26, 30, 34, 39, 42, 46, and 49 are marked at the beginning of their respective staves.

D.S.al Coda

Coda musical notation, measure 52. The measure begins with a Coda symbol (a circle with a cross) and contains a melodic phrase consisting of a quarter note, a quarter rest, a quarter note, a quarter rest, a quarter note, a quarter rest, and a half note.